



Mount Lewis Infants School Newsletter

28B Noble Ave, Greenacre. 2190

Phone: 9790 4650

Fax: 9790 1067

email: mtlewisinf-p.school@det.nsw.edu.au

web: www.mtlewisinf-p.schools.nsw.edu.au

Term 2 Week 4

21 May 2019

CALENDAR - TERM 2 2019		NOTES AND MONEY DUE
Date	Time & Event	*NO EFTPOS payments accepted after 3pm
Wednesday, 22 May	Simultaneous Story time	
Friday, May 24	Mini Canteen	
Thursday, May 30	Year 2 Transition Meeting	
Wednesday, June 12	Whole School Eid Picnic Day	
Friday, June 14	SRC Jelly Day	

PRINCIPAL'S MESSAGE

Dear Parents/Carers,



Term 2 is traditionally the term for assessment and reporting. The teachers are busy preparing and administering assessments to make accurate reporting grades and comments for all students. It is best if students are at school as often as possible and on time. Valuable information and setting the scene for the day is part of morning routine. When children come late they aren't sure what the teacher has said and what they should do next. Please try to get your children at school by 8:55am so they can join in with their class to walk into their room and start the day in a calm and smooth way.

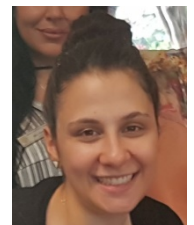
Term 2 is also the time we have our specialised music program by, Jellybeans. Every year this program makes a very positive contribution to the delivery of that curriculum area. We are very fortunate to have Karen Harcombe back. She now knows our students and is able to extend them from where they were at the previous year.

This term we will be offering parent/carer workshops on various topics, starting with Year 2 families next Thursday. At this meeting we will be discussing transition to Yr 3 procedures. Please look for the invitation with the details. Later in the term Mrs Milic and I will be presenting an information session on understanding the reports and the reporting system and we hope to present another session on Wellbeing as the last one we had, had excellent feedback. By inviting you into the school and making you part of your child's education the strong partnership between home and school is strengthened and enhances your child's love of learning. Looking forward to seeing you at the workshops.

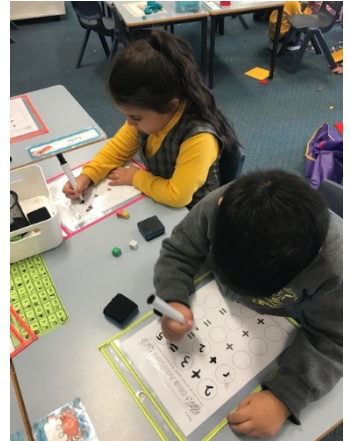
Thank you to Mrs Thompson for Relieving as Principal while I took some Long Service Leave. The school term started very well and all processes were followed with little issue. Mrs Thompson was very mindful of taking care of her class as well as the school and worked closely with Mrs McWaters to ensure 2L continued with their learning.



Mrs Smithwick has returned to MLIS after 4 terms of Maternity leave. Mrs Smithwick is a specialist EAL/D teacher and is back in her role for 2 days this term. Welcome back! And we will farewell Mrs Al-Seblani next week. Her last day will be on Wednesday. We wish her well for the arrival of her first baby and thank her for being part of our staff. Best wishes!



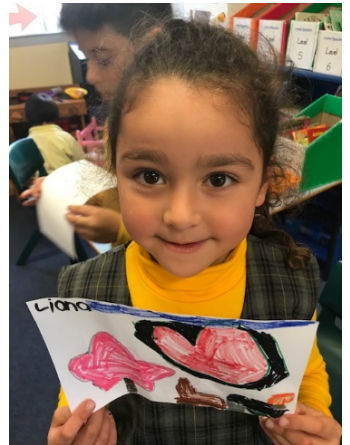
KINDERGARTEN NEWS



PLAY



Every Tuesday and Thursday afternoon our Kinder students are busy learning through play. At Mount Lewis Infants School, play is an important part of the classroom program. It helps children learn about the world and society. It promotes problem-solving, creativity, imagination, cognitive, social, and emotional development. As you can see from the happy smiles in the photos, our students value play as much as we do. 😊



RECENT EVENTS



Representatives from **Canterbury Bankstown Council** came out to teach our Year 2 students about what Council does for the community. Our students got to be the politicians and held their own mock planning meeting about the proposed improvements to Mount Lewis Reserve. Zahra (2L) played the role of the Mayor and did a fantastic job keeping our little politicians and our council assembly under control.

At the end of the meeting we got to see the proposed plans for Mount Lewis Reserve, the park next door to our school. Leanne and Willa showed the students some possible playground equipment ideas and the students voted for the one they wanted for their park. The students were very thoughtful with the reasons behind their choices.

The teachers who attended were very proud of all the students and how seriously our Year 2 students took their job helping council with making decisions about the park. What a wonderful opportunity for our students to have a say about what happens in their community.

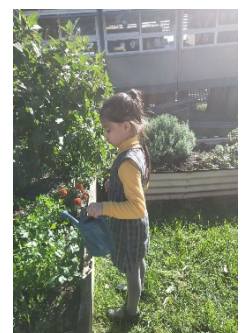
We can't wait to use our new park.



GARDEN NEWS



Year 2 have been hard at work weeding and digging up our soil to prepare for our winter vegetables. We are still getting eggplants, yummy strawberries, tomatoes and we have lots of parsley and coriander. Last week we planted some spinach, lettuce and snow peas. Thank you to everyone who supports our gardening activities. The money we raised last term is going directly back into the garden this term.



UPCOMING EVENTS



The Jellybeans Music Program has started!

Jellybeans music lessons have started. The students are enjoying learning to play instruments, sing new songs and even read music! Mrs Harcombe has been working with Mount Lewis Infants School students for a number of years now and is always amazed at how keen our students are to learn about music.



LIBRARY NEWS

One of our priorities during library lessons is to instil a love of reading. Every week we focus on two quality texts before students choose and borrow their own books to take home.

On the 22nd May MLIS will be taking part in **National Simultaneous Story Time**. Every year a picture book, written and illustrated by an Australian author and illustrator, is read simultaneously in schools and many other places around the country. This year we will be reading *Alpacas with Maracas* written and illustrated by Matt Cosgrove.



UNIFORMS

Winter Uniforms for Terms 2 & 3:

Term 2 has started. In Terms 2 and 3, all students wear the winter uniform. Please see the display in the office area or speak to Mrs Markland or Mrs Conte for advice.



The school sells most of the uniform except the gold skivvy or gold long sleeve polo and grey stockings. Most parents buy the skivvy/polo from Target, Kmart, Big W, Lowes etc.

Girls: Grey Check Tunic/Dress with gold skivvy or gold polo and grey stockings.

Boys: Long Grey School Pants with gold skivvy or gold polo.

Everyone wears the grey zip jacket with school logo.

It is important to wear the correct uniform, especially with the additional items like, stockings and hijabs. The school has a supply of hijabs for the families who choose to purchase one that best suits the school uniform.

Please note that students can wear either the gold skivvy or long sleeve gold polo under the winter uniform.



PBL NEWS & THIS WEEK'S SCHOOL VALUE

Positive Behaviour for Learning (PBL) is our school program that aims to help in creating safe, effective teaching and learning environments. For more information on PBL go to

<http://www.pbl.schools.nsw.edu.au/about-pbl>

This week's school value is:


CONFIDENCE

At MLIS we show confidence through:

- working with others
- trying our best
- sharing our understanding



In every Newsletter, the table below will have the names of the children receiving PBL awards. If you see your child's name in the table, you will know that they will be presented with that award at the following Monday's assembly. We take a photo of the group and it will be published in the Newsletter the following week. Parents/Carers are welcome to the assembly on **Monday 13 May**.

BRONZE	SILVER	GOLD	MEDALLION
Malek 1A Eesa 2L Mohammad KG	Leyana 2S	Salah 1A Zakaria 2S	Jihad 2L 



SRC NEWS

At the last SRC meeting, the students talked about the playground and how much everyone is enjoying having a few toys and games to play with. The group would like to raise additional funds to buy some more games for lunchtime use. After lots of discussion about what the students have been learning in class, they came up with a Science themed event called 'Frog in a Pond Jelly' Day which be held later this term and run by the SRC team.

We are very proud of our SRC 😊



COMMUNITY NEWS

This is another reminder for parents to observe all traffic rules around the school, which includes **not parking across or in residents' driveways** (either fully or partially).

It has been brought to our attention that some members of our school community are still choosing to park in and across the driveways of our neighbours' homes, risking a fine of up to \$263.00. This behaviour is not only upsetting to our neighbours but dangerous for our students who are too little to be seen by the driver of a reversing car. Residents have been advised to report these incidents to both Council and the NSW Police and to forward photos.



Both the school and the P&C ask that parents be considerate about where they park. For more information about road safety around school please visit <https://roadsafety.transport.nsw.gov.au/downloads/keeping-our-kids-safe-around-schools.pdf>

P&C NEWS

The next P&C meeting is in Term 2 on Friday 14 June in the library.

Mini Canteen is on Friday 24 May



Muffins \$1

Popcorn \$1

Fruit \$1

Jelly \$1

Free Music Lesson

We're a Registered Creative Kids Provider!
Receive \$100 off!

Using advanced teaching methods for better results!
AMEB Exams available in May and November
Enrol Now!

Instrument Hire available:
Piano | Violin | Guitar | Singing | Saxophone
Flute | Clarinet | Drums | Trumpet | Trombone

Shine Music School Burwood
3/28 Belmore St Burwood
Park in Emerald Square
www.shinemusic.com.au
CALL 96879978 TO BOOK TODAY!

Woolworths Earn and Learn

Woolworths are helping kids across Australia get exciting new equipment for their schools. Simply shop at Woolworths, collect the stickers and give your stickers us, so we can redeem them for educational equipment we can use in science, technology, maths, arts and more!


Our P&C have organised collection boxes at the local Woolworths supermarkets and there's even one at our school.

Thanks to last year's efforts, the students were given some great sporting equipment, including a basketball hoop and soccer goals.



SPECIAL EVENTS





The **Mother's Day Stall** was a huge success! The students were thrilled with the choice of gifts and some took quite some time deciding on the most special gift especially for their mum. A big thanks goes to our wonderful P&C and the volunteers who ran the stall for our students and for our community. We hope you all had a very Happy Mother's Day.



Help Needed!

Can you spare 1 or 2 hours while your child is at school?

We are asking for some very kind, helpful parents to assist with delivering pamphlets advertising our school in the local neighbourhood. This just means putting pamphlets in the letterboxes on your local street.

Please see Mrs Conte, Mrs Markland or Miss Ferguson for further information and to collect some pamphlets.

Please support our school. Your assistance would be greatly appreciated.

Miss Ferguson
Rel. Assistant Principal



How to install the SkoolBag app

instructions for parents and community

1. Get your favourite mobile device
2. Open the App Store/Play Store
3. Search for "SkoolBag"
4. Download the free app
5. Open the app and add your school(s)

for Apple users



for Android users



for more info visit skoolbag.com.au

SkoolBag

MOUNT LEWIS INFANTS SCHOOL



Enrolments at Mount Lewis Infants School
are now open for children in
Kindergarten to Year 2 in 2020.



Please call 9790 4650
or come and visit our school at
28B Noble Avenue Greenacre

We look forward to meeting you!

